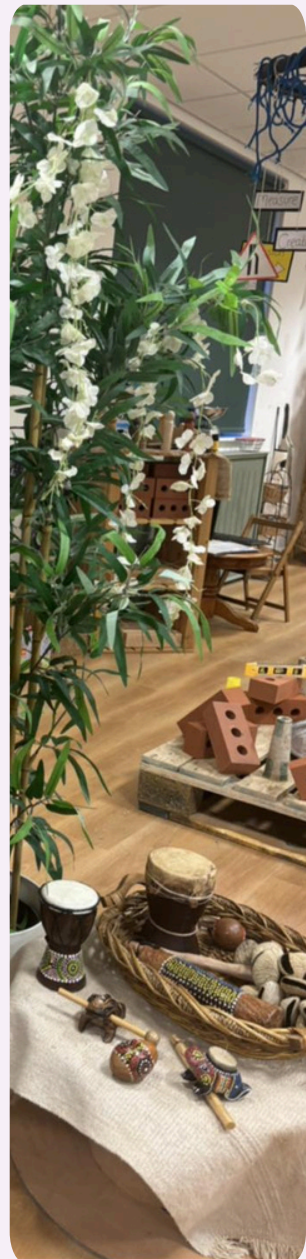




Parent Pack

Your guide to joining the Wibli Wobli family

www.wibliwobli.co.uk



WELCOME TO THE WIBLI WOBLI FAMILY

We understand that this is one of the most important decisions you will ever make.

The development of your child during those early years is so important, and we really get that. At Wibli Wobli we are committed to providing a nurturing, secure and stimulating environment where children can learn and grow through language and play. Our nursery values are that we love language, we love play, we love our planet and we love well-being.

We offer a friendly and homely environment founded on the curiosity approach with lots of invitations to play and explore. We take great pride in supporting each child's individual development through a varied programme of play-based learning and child-led activities.

We are proud to be an inclusive setting that welcomes children from all backgrounds, languages and additional needs.

We recognise the importance of strong partnerships with families and strive to maintain open and transparent communication at all times. You will be kept informed of your child's progress and experiences through regular updates, meetings, and opportunities to engage with the nursery's activities.

When you leave your child at a Wibli Wobli Nursery setting you can have complete peace of mind knowing your child is safe with loving and caring staff.

Thank you for entrusting us with your child's early education. We look forward to building a positive and rewarding relationship with your family.

Looking forward to welcoming you soon !

Wibli Wobli Team

Wibli Wobli Nursery have been wonderful. The staff are caring, professional and homely. The nursery's whole vibe is very natural relaxed and comforting, it helps massively with independence and the staff are constantly striving for new opportunities for the children.

My daughter has been with Wibli Wobli for a long time now and we as a family are extremely happy with her care and the support from the staff. I personally don't know anyone with anything negative to say about them. Best nursery by far.



OUR VALUES

WE LOVE PLAY - THE CURIOSITY APPROACH

We are passionate advocates for the benefits of child-led, play-based learning at Wibli Wobli nursery. We follow the curiosity approach in our settings by creating rich, inspiring environments that spark wonder and invite children to follow their interests. By using open-ended resources and slowing down the pace of learning, we nurture inquisitive minds and confident decision-makers.



This approach values the child's voice, encouraging independence and a lifelong love of learning. When children are free to explore, question, and imagine, they thrive—and that's exactly what we aim to foster every day. We have also embedded Nia Beynon resources and practices at our settings which has been showcased through a series of videos called 'through the eyes of a child'.

“

There is so much here to stimulate the minds and imaginations of the children that attend this outstanding place.

Our daughter had the most amazing time here. Every single person that works here are a credit to Wibli Wobli and their profession.

”

WE LOVE OUR PLANET

At Wibli Wobli, caring for the planet is woven into everything we do. We believe in nurturing a deep respect for nature through outdoor play, practicing sustainability through recycling and using natural resources and regular adventures into our local community.

Children learn to explore the world with curiosity and care, whether they're planting seeds, spotting wildlife, or helping tidy up green spaces. We have a multi-cultural library with books from around the world, explore different cuisines from around the world as part of our menu and celebrate the rich diversity of our families, even learning home languages which helps every child feel seen and valued. By embracing sustainability and cultural awareness from the earliest years, we're growing kind, thoughtful citizens of the world.



OUR VALUES

WE LOVE WELL-BEING

The food for the children is class - I always want the menu myself and there are around the world menus for experimenting different flavours and cultures!

Well-being isn't just a priority for us –it's a passion. We believe that happy, healthy staff create the most nurturing environments for children to thrive. That's why we invest deeply in our team's mental and physical health through our Health Assured program, regular check-ins, and a culture of care.

For our children, we create safe spaces to explore feelings, build emotional resilience, and celebrate each child's uniqueness and individuality. Through inclusive activities, stories, and play, we help children understand and embrace differences, fostering kindness and confidence from the very start.

We believe that an active lifestyle and good nutrition play an essential part in wellbeing. We promote outdoor play and activities such as Urdd Sports. Our nutritious and fresh meals are served on site by our nursery cook. We cater for any allergies and dietary requirements by serving the same meals with substituted ingredients so all children are included.

Example Menu

WIBLI WOBLI MENU - Babis Menu



Week 1	Mon/Llun	Tues/Mawrth	Weds/Mercher	Thurs/lau	Fri/Gwener
Breakfast – Brecwast	Selection of cereals				
AM Snack – Byrbryd	Fruit + milk	Fruit + milk	Fruit + milk	Fruit + milk	Fruit + milk
Lunch – Cinio	Blended chicken fajita sauce with pasta and broccoli VE - Quorn chicken substitute	Chicken and rice with sweetcorn puree and veg VE- Quorn chicken substitute	Homemade macaroni bolognese with green beans VE- Quorn mince substitute	One pot fish and rice with broccoli VE- Quorn chicken substitute	Zucchini style 'pizza' rollups and mash potatoes. VE- DF cheese substitute
PM Snack - Byrbryd	Vegetable sticks and hummus	Toasted pitta bread sticks with hummus	Mixed fruit salad	Smashed avocado on rice cakes	Greek natural yoghurt with fruit puree
Tea - Te	Spinach and banana muffins with strawberries and Greek yoghurt VE- DF yoghurt substitute	Spaghetti hoops on toast VE- Beans substitute	Ham/Cheese omelette with boiled apple + cinnamon VE- DF cheese substitute, wrap pinwheels instead of omelette	Bagels with cream cheese and veg sticks VE- DF cream cheese substitute	Oat and banana pancakes with strawberries + bananas



WELSH LANGUAGE

WE LOVE LANGUAGE

Children are immersed in Welsh at Wibli Wobli through our Welsh Language Policy. From morning greetings to songs, stories, and playful interactions, Welsh is a living, breathing part of our environment. This approach helps children absorb the language naturally, building confidence and fluency from an early age. Early exposure to a second language enhances cognitive development, improves memory, fosters cultural awareness, enhances social skills and opens up so many opportunities. By celebrating Welsh traditions and using the language meaningfully every day, we help children connect with their heritage and grow up with a strong sense of identity and belonging.

FAQs:

Q: Do all of our children come from Welsh speaking families ? A: Absolutely NOT ! In fact, most of our children come from no Welsh background at all.

Q: Will going to a Welsh speaking nursery hold my child back with their English ? A. NO. Learning another language actually enhances your language processing ability, including your native tongue.



Q: My child will be going to an English school. Why should I put them in a Welsh language nursery if they aren't going to be continuing in Welsh school ?

A: There are so many benefits to learning another language at a young age. Cognitive benefits such as critical thinking, flexible thinking, creativity, the ability to process your native tongue and other languages in the future. It certainly does no harm to be exposed to another language even if for a temporary amount of time.

Q: My child already speaks two languages fluently. Will they get confused ?

A: Not at all. A few of our children speak more than one language and have no problems picking up Welsh - Italian, French and Hindi to name a few ! Bilingual children tend to pick up Welsh even more easily than monolingual children.

Q : I don't speak Welsh. Does that matter ?

A : Not at all. Most of our parents don't speak Welsh. We can even provide support with learning Welsh if you are interested !

I was initially apprehensive about a Welsh language nursery as we don't speak Welsh at home but I shouldn't have been. I'm amazed at the Welsh songs and phrases she's coming out with and she loves it!

We're now looking into Welsh education as we're so happy with the positive impact it's had on her.



SETTLING IN PROCESS

We work with parents and children to ensure a smooth, supportive, and welcoming transition into our Wibli Wobli family.

Shortly before your child's start date we will contact you to arrange your two free settle in sessions of 2 hours that usually take place the week before. On the first session you will meet staff who will :

- go through nursery policies, procedures and practices
- complete the All About Me form with details about your child's interests and needs
- answer any queries or worries you may have about the settle in process

For the first session pack a bag with a spare change of clothes, water bottle or formula, and for younger ones nappies and any comforter.

It is totally normal to feel anxious about the first session but we try and encourage parents to feel as reassured and enthusiastic as possible and to keep the drop routine brief and cheerful to help little ones settle. If additional settle in sessions are needed or a phased transition into nursery we will discuss this with you on an individual basis.

Key worker policy

Your child's key worker is allocated from the beginning and will be your main point of contact, however children generally bond well with and are cared for by all staff in their room at the setting.

For any queries or concerns during this settle in period, you can speak to your key worker or the room leader and/or management are on hand if needed.

My three year old has settled in so well and the team have supported his additional needs amazingly. He goes in and comes out beaming every day !



OUR FEES

Our latest fees are accessible on our website www.wibliwobli.co.uk. All meals, snacks, resources (except nappies and formula) and activities are included.

We charge a £100 non-refundable registration fee to secure the space.

We accept payment via tax free childcare, the childcare offer funded hours, childcare vouchers and universal credit. We also offer flying start funded spaces in both settings, and in Newport only, education funded hours.



Parents are charged if they do not attend a booked session where the nursery is still open. However parents can sell nursery unused sessions to other children in the same room, and a credit is added to their account if the session is purchased by another parent.

We are closed at weekends, statutory bank holidays and the period between Christmas day and New Years day. We do not charge for bank holidays or closure days over and above funded hours.

We offer discretionary discounts for siblings, full time places and quieter days subject to availability and numbers in the individual setting. We may amend our fees once per year, parents will be given at least one month's written notice of any fee rise.

If a child is not collected within 30 minutes of their booked session, our late collection procedure will be followed. Staff ratios are maintained, and two staff members will stay with the child if outside normal hours. A late fee applies for the additional care which can include the additional operating costs incurred.

INVOICING

Invoices are due on the 1st of every month for the childcare during that month
Late payment fees apply if monies are received after that date



COMMUNICATION WITH PARENTS

We work in partnership with parents to support each child's journey.

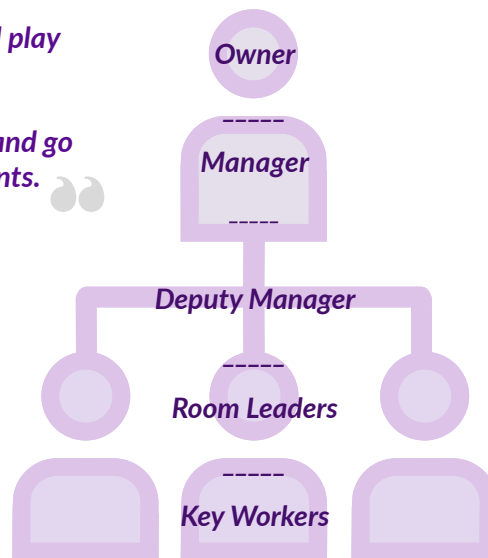
We believe strong communication is key to building trust and a strong partnership with parents. You will receive regular updates through our nursery app Family on your child's day, including photos, meal logs, sleep times, and important announcements. We also use the app for messaging, invoicing, and sharing nursery news. We hold regular stay and play sessions and parents' evenings to give you the chance to discuss your child's progress and development. We also have a parent committee that parents can join to put forward their own ideas on running the nursery.

If you ever have questions or need support, our staff operational chart clearly outlines who to speak to—from key workers to room leaders and management—so you always know where to turn. Names and faces of all staff and their role are clearly displayed at the setting.



The parent engagement stay and play sessions make my month.

The leadership team are brilliant and go above and beyond to help parents.



Its great seeing all the photos of what he gets up to during the day and the staff provide excellent communication on pick up.

We're always kept in the loop about what's going on and are able to ask for help with things like funding, how childcare hours are spread or even resources to improve our own Welsh.

I am beyond pleased with the care my child receives at Wibli Wobli Nursery.

The daily updates and photos provide peace of mind, knowing that my child is in good hands and thriving in such a positive environment.



OUR PROVISION

Children follow a daily routine and curriculum-based child-centred plan which fully complies with the New Curriculum for Wales and provides a stimulating and engaging environment for the children. We promote learning through play and exploring the environment through invitations to play following the Curiosity Approach.

An example of a daily routine is as follows

(adapted according to the age and needs of the children) :

- 8:00 - 9:00 Greet parents - Breakfast time
- 9:00 - 9:15 Welcome group time
- 9:15 - 10:00 Free play - Free flow inside and outside
- 10:00 - 10:30 Rolling snack
- 10:30 - 11:00 Free flow inside and outside
- 11:00 - 11:45 Physical activities
- 11:45 - 12:30 Lunchtime
- 12:30 - 2:00 Quiet time and goodbye to morning children
- 2:00 - 2:15 Rolling snack - Free flow inside and outside
- 2:15 - 3.30 Group Activities
- 3:15 - 3:45 Physical Activity
- 3:45 - 4:15 Tea time
- 4:15 - 5:00 Story time - Free-Play get ready for home-time
- 5:00 - 6:00 Greet parents - Home time



Nursery meals are cooked on site by the nursery cook. We provide a three week menu menu and a culture week each month exploring a cuisine from around the world. Meals are nutritious, varied and are adapted to cater to any allergies, intolerances and dietary requirements. Adapted meals are kept as similar as possible so that all children enjoy the same eating experience.

We will offer a number of activities within the nursery through both free play and structured play and organised activities for example circle time. We will also look to bring in additional activities from outside providers to give children different opportunities, in particular those who can provide services through the medium of Welsh- such as Babis Bach Babis, Sparklab Cymru science and Urdd sports.

OUR STAFF

Qualifications of staff :

We follow safe recruitment practices and ensure all staff are suitably qualified, DBS and reference checked.

- All senior staff are qualified to level three in childcare and have or are working towards level five in child care
- Staff working with school children are qualified level three playwork or working towards this.
- All nursery practitioners are qualified or are working towards level three in child care.

We welcome apprenticeships, student placements and training opportunities for Welsh speakers keen to pursue a career in childcare. Students and volunteers that are not qualified are a valuable asset to the setting but they will never be left unsupervised or counting towards the staffing ratio. Domestic and office staff all have an enhanced DBS and may have daily contact with the children but are not left with the children.

Staff ratios are :

0-2 years : 1 staff to 3 children 2-3 years : 1 staff to 4 children 3-12 years : 1 staff to 8 children

To operate the nursery effectively, staff are fully trained to implement our policies and procedures on a regular basis, and there is a clear structure in place for staff to communicate. Regular staff meetings take place to discuss operations as well as any concerns and feedback.



Staff reporting structure:

- The Nursery Manager reports to the Nursery Owner
- The Deputy Manager / Room Leaders report to the Nursery Manager
- Nursery Practitioners and Students / Volunteers / Apprentices / Agency Staff report to their Room Leader

If there is a concern raised about the person they are reporting to they can report to the individual above (e.g. a nursery practitioner can report their concern about their room leader to the Deputy Manager). A meeting can be requested on a 1:1 basis and a room is available for this purpose.

Staff are required to read and understand all our policies and complete compulsory training as part of their induction, to include First Aid, Fire Safety, Food Hygiene and Child Safeguarding.

PARENT PACK

Please see below important documentation, policies and procedures and where to find them.

Parents complete an Enrollment Form which includes signing our Contract Terms and Conditions and are then sent a link to access their account on Famly. An invoice for the £100 registration fee is then sent via Famly, which must be paid to secure the space.

Copies of the below key documents can be viewed on the documents section of the Famly app. Copies of all policies are available on our nursery website www.wibliwobli.co.uk/our-policies/.

KEY DOCUMENTS (on Famly) – DOGFENNAU ALLWEDDOL (ar Famly)	
<ul style="list-style-type: none"> Nursery Brochure (SOP) Contract Terms and Conditions CIW Certificates – EN and CY ICO Certificate Insurance Certificate Price List Staff Operational Chart Early Years Wales Certificate Mudiad Meithrin Certificate NDNA Certificate Clybiau Plant Certificate 	<ul style="list-style-type: none"> Llyfryn Meithrinfa (SOP) Cytundeb Termau ac Amodau Tystysgrifau AGC – Saesneg a Chymraeg Tystysgrif ICO Tystysgrif Yswiriant Rhestr Brisiau Siart Gwiethredol Staff Tystysgrif Early Years Wales Tystysgrif Mudiad Meithrin Tystysgrif NDNA Tystysgrif Clybiau Plant
HIGHLIGHTED POLICIES (on website) – POLISIAU PERTHNASOL (ar y wefan)	
<ul style="list-style-type: none"> Child Safeguarding Policy Complaints Policy Medication Policy Sickness Policy 	<ul style="list-style-type: none"> Polisi Diogelu Plant Polisi Cwynion Polisi Meddyginiaeth Polisi Salwch



CARDIFF SITE DETAILS

Responsible Individuals:	Leah George, Natasha Baker
Person In Charge:	Leah George

CIW Number CYM00006455. We are a full day care nursery setting registered to provide care for up to 69 children aged 0-12 years as follows :

- 0-2 years - 18 children
- 2-12 years - 51 children (of which age 7-12 years maximum 10 children)

We also provide wrap around provision with local schools subject to interest and holiday provision.

We are open Monday to Friday 7am to 6pm. We are an inclusive service and welcome children with additional needs. We have a designated ALNCo to support the needs of ALN children and staff receive necessary training to provide high-quality care.

We promote equality, diversity, and respect across all aspects of our service. All children, parents, carers, staff, and third parties are treated with respect, listened to, and included. Activities are accessible to all, and children are included in decision-making appropriate to their age and development.



Individual Care of Children

We nurture each child's learning and growth through language, play, and choice-led activities. Recognising that every child is unique, we tailor care to their needs, abilities, and interests, providing clear boundaries, age-appropriate expectations, and safe supervision to support independence.

Each child is assigned a key worker who collaborates with parents and carers to ensure care is personalised. Assessments are completed through pre-visits, settling-in sessions, and enrolment forms, including information on allergies, dietary needs, medication, additional support requirements, and for older children, details on personal devices or self-administered medication.



CARDIFF SITE FACILITIES

The main nursery setting is a building located at number 53 The Parade, Roath, Cardiff, CF24 3AB. The nursery has a secure front door where parents have to buzz in. Staff can enter using key fobs.

As you first enter into the nursery there is a welcome area. On the left hand side as you walk in is the babies room (0-2 years), on the right hand side is the toddler room (2-3 years). Next to the entrance area is a children's toilet and changing room and inside the toddler room a further four children's toilets. All children are accompanied at all times when accessing the downstairs entrance area.



Behind the welcome area is access to the garden which is exclusively for children attending the nursery. Access to the first floor is via the lift or stairs. On the right hand side is the preschool room (3-12 years), in the middle is access to changing rooms and toilets for children and a separate toilet for staff and visitors. Children are accompanied at all times to access the toilet or changing facilities. On the left hand side is the kitchen, staff room, storage and office which is accessible to staff only via fob access. The preschool room is adapted for older children before, after school and throughout the holidays. We will provide age-appropriate resources, quiet workspaces and opportunities for more challenging activities. Risk assessments will be carried to protect younger children from small resources and intended only resources for older children.

To the front of the building is private parking spaces for up to 4 vehicles. On street parking is available along The Parade. Parents are reminded that they retain full responsibility for their children while they are outside the main entrance of the nursery building as outlined in our Arrivals and Departures Policy.

In each of the rooms there are age appropriate activities and resources, with separate sleep and quiet areas, home corner, small world area, artist corner and bistrot used during snack and meal times.

CCTV operates throughout the nursery in all areas where children are cared for, except toilets and changing areas, to ensure the safety and security of children, staff and visitors. We have a Fire Evacuation policy and procedure followed in the event of a fire, with the Assembly Point at the far end of the nursery garden. Accidents and incidents are responded to promptly, recorded and reported to parents and relevant authorities in accordance with our policies and procedures.

Outings - we will take the children on regular outings so that they can benefit from experiences in the local area. For example the local Bute Park, businesses and shops. Outings for older children may include community based experiences, promoting independence and responsibility.



NEWPORT SITE DETAILS

Responsible Individual:	Nicola Passey, Natasha Baker
Persons In Charge:	Nicola Passey, Carys-Anne Pounds

CIW Number CYM00006088. We are a full day care nursery setting registered to provide care for up to 100 children aged 0-5 years as follows :

- 0-2 years - 30 children
- 2-3 years - 30 children
- 3-5 years - 40 children

We are open Monday to Friday 7:30am to 6pm. We are an inclusive service and welcome children with additional needs. We have a designated ALNCo to support the needs of ALN children and staff receive necessary training to provide high-quality care.

We promote equality, diversity, and respect across all aspects of our service. All children, parents, carers, staff, and third parties are treated with respect, listened to, and included. Activities are accessible to all, and children are included in decision-making appropriate to their age and development.



Individual Care of Children

We nurture each child's learning and growth through language, play, and choice-led activities. Recognising that every child is unique, we tailor care to their needs, abilities, and interests, providing clear boundaries, age-appropriate expectations, and safe supervision to support independence.

Each child is assigned a key worker who collaborates with parents and carers to ensure care is personalised. Assessments are completed through pre-visits, settling-in sessions, and enrolment forms, including information on allergies, dietary needs, medication, additional support requirements.

NEWPORT SITE FACILITIES

The main nursery setting is in Units 1 and 3 of Oak House, Vaughan Court, Newport, NP10 8BD. On the ground floor (Unit 1) care takes place for Toddlers (2-3 years) and Pre school (3-5 years). On the first floor (Unit 3) care takes place for Babies (0-2 years). The offices, storage and visitor welcome area is situated upstairs in Unit 3 of the same building. There are separate toilets for staff and visitors located in the communal areas on both floors, including baby changing facilities downstairs. The nursery has a secure door where parents have to buzz in. Staff can enter using a key fob.



On entry to the nursery the nappy room for the toddlers is to the right and then the Toddler main play area, Sensory/Sleep Room and Dining room. Pre school is further down the corridor with a large playroom and free flow access to the garden via a door at the end of the room. They also have their own dining room which is attached to the kitchen area downstairs. All toddlers and pre school children have access to the toilets downstairs.

Babies are located on the first floor. There is a large, welcoming space, with the kitchen, baby changing and storage rooms on the left. The space then opens into the main playroom and sleep room located on the right-hand side. At the end of the room, there is a gentle transition into a more peaceful, calming area, which leads to two smaller cot rooms.

There is ample free parking for staff and parents to drop off their children on site. The nursery garden is split into two areas, Preschool and toddlers (Main garden area) and Babies (smaller padded floored garden area). We also have a large forest school area to the other side of the building with exclusive supervised access for nursery children, including an outside compost toilet, fire pit area, bell tent, sleepers with planters, a bug house and a den.

CCTV operates throughout the nursery in all areas where children are cared for, except toilets and changing areas, to ensure the safety and security of children, staff and visitors. We have a Fire Evacuation policy and procedure followed in the event of a fire, with the Assembly Point at the far end of the car park. Accidents and incidents are responded to promptly, recorded and reported to parents and relevant authorities in accordance with our policies and procedures.

Outings - we will take the children on regular outings so that they can benefit from experiences in the local area. For example the local Tredegar Park, local businesses and shops.



CONTACT US

Good communication is key - we adopt an approach of transparency and honesty

Our contact details are the following:

Wibli Wobli Newport
Unit 1 Oak House
Vaughan Court
Newport NP10 8BD
01633 328970
newport@wibliwobli.co.uk

Wibli Wobli Cardiff
53 The Parade
Cardiff CF24 3AB
029 22973722
cardiff@wibliwobli.co.uk

“
Choosing Wibli Wobli Nursery was the best decision I have ever made!! He is like a bottle of pop driving into the nursery carpark.

From day one, staff have gone above and beyond to make my son feel comfortable and welcome. He is treated like their own. I couldn't be happier in my choice of nursery!

”

You can also visit www.wibliwobli.co.uk to contact us and view our policies and procedures.

Wibli Wobli is a trading name of Wibli Wobli Nursery Ltd company number 13980536 and Wibli Wobli Cardiff Ltd company number 16590606.

If you have any worries or concerns - we are here to help. You can follow our Complaints Procedure which is available on request or accessible at any time on our website. You can also contact our regulatory body Care Inspectorate Wales :

Care Inspectorate Wales
Welsh Government
Sarn Mynach
Llandudno Junction
LL31 9RZ
Phone : 0300 7900 126
Email : CIW@gov.wales

We are really looking forward to you starting your journey with us at Wibli Wobli and to supporting you and your child every step of the way.

Wibli Wobli Team

This guide is available in Welsh and in larger print or alternative formats on request to ensure accessibility for all families. This brochure was last reviewed in March 2026 and will be reviewed annually. Any changes made to our SOP Brochure will be notified to CIW.

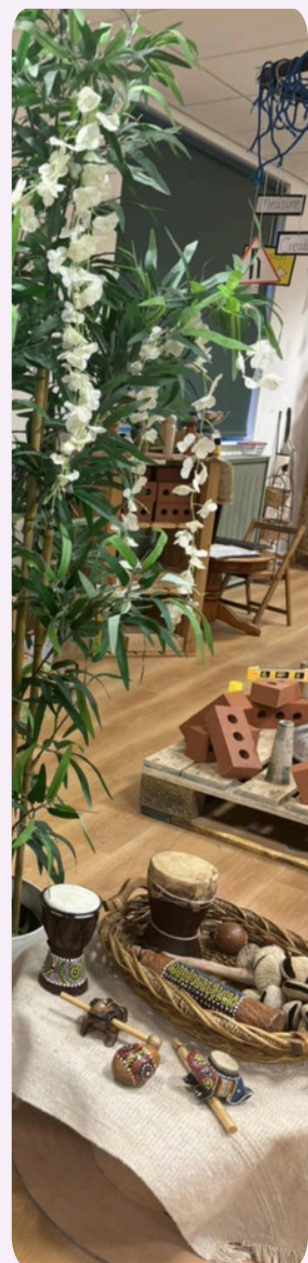




Pecyn Rhiant

Eich canllaw i
ymuno â theulu
Wibli Wobli

www.wibliwobli.co.uk



CROESO I DEULU WIBLI WOBLI

Rydym yn deall mai dyma un o'r penderfyniadau pwysicaf y byddwch byth yn ei wneud.

Mae datblygiad eich plentyn yn ystod y blynyddoedd cynnar hynny mor bwysig, ac rydym yn deall hynny'n fawr. Yn Wibli Wobli rydym wedi ymrwymo i ddarparu amgylchedd meithringar, diogel ac ysgogol lle gall plant ddysgu a thyfu trwy iaith a chwarae. Gwerthoedd ein meithrinfa yw ein bod yn caru iaith, rydym yn caru chwarae, rydym yn caru ein planed ac rydym yn caru lles.

Rydym yn cynnig amgylchedd cyfeillgar a chartrefol wedi'i seilio ar y dull chwilfrydedd gyda llawer o wahoddiadau i chwarae ac archwilio. Rydym yn ymfalchio'n fawr mewn cefnogi datblygiad unigol pob plentyn trwy raglen amrywiol o ddysgu seiliedig ar chwarae a gweithgareddau dan arweiniad plant.

Rydym yn falch o fod yn lleoliad cynhwysol sy'n croesawu plant o bob cefndir, iaith ac anghenion ychwanegol.

Rydym yn cydnabod pwysigrwydd partneriaethau cryf â theuluoedd ac yn ymdrechu i gynnal cyfathrebu agored a thryloyw bob amser. Byddwch yn cael eich hysbysu am gynnydd a phrofiadau eich plentyn trwy ddiweddariadau rheolaidd, cyfarfodydd a chyfleoedd i ymgysylltu â gweithgareddau'r feithrinfa.

Pan fyddwch yn gadael eich plentyn mewn lleoliad Meithrinfa Wibli Wobli gallwch gael tawelwch meddwl llwyr gan wybod bod eich plentyn yn ddiogel gyda staff cariadus a gofalgar.

Diolch i chi am ymddiried addysg gynnar eich plentyn ynom ni. Edrychwn ymlaen at feithrin perthynas gadarnhaol a gwerth chweil gyda'ch teulu.

Yn edrych ymlaen at eich croesawu cyn bo hir !

Tîm Wibli Wobli

Mae Meithrinfa Wibli Wobli wedi bod yn wych. Mae'r staff yn ofalgar, yn broffesiynol ac yn gartrefol. Mae awyrgylch cyfan y feithrinfa yn naturiol, hamddenol a chysurus iawn, mae'n helpu'n aruthrol gydag annibyniaeth ac mae'r staff yn ymdrechu'n gyson am gyfleoedd newydd i'r plant.

Mae fy merch wedi bod gyda Wibli Wobli ers amser maith bellach ac rydym ni fel teulu yn hynod hapus gyda'i gofal a'r gefnogaeth gan y staff. Yn bersonol, dydw i ddim yn adnabod unrhyw un sydd ag unrhyw beth negyddol i'w ddweud amdany'n nhw. Y feithrinfa orau o bell ffordd.



EIN GWERTHOEDD

RYDYM YN CARU CHWARAE - Y DULL CHWILFRYD

Rydym yn eiriolwyr brwd dros fanteision dysgu dan arweiniad plant, sy'n seiliedig ar chwarae ym meithrinfa Wibli Wobli. Rydym yn dilyn y dull chwilfrydedd yn ein lleoliadau trwy greu amgylcheddau cyfoethog ac ysbrydoledig sy'n sbarduno rhyfeddod ac yn gwahodd plant i ddilyn eu diddordebau.



Trwy ddefnyddio adnoddau agored ac arafu cyflymder dysgu, rydym yn meithrin meddyliau chwilfrydig a gwneuthurwyr penderfyniadau hyderus. Mae'r dull hwn yn gwerthfawrogi llais y plentyn, gan annog annibyniaeth a chariad gydol oes at ddysgu. Pan fydd plant yn rhydd i archwilio, cwestiynu a dychmygu, maent yn ffynnu - a dyna'n union yr hyn yr ydym yn anelu at ei feithrin bob dydd. Rydym hefyd wedi ymgorffori adnoddau ac arferion Nia Beynon yn ein lleoliadau sydd wedi'u harddangos trwy gyfres o fideos o'r enw 'trwy lygaid plentyn'.

“

Mae cymaint yma i ysgogi meddyliau a dychymygion y plant sy'n mynychu'r lle rhagorol hwn.

Cafodd ein merch amser anhygoel yma. Mae pob person sy'n gweithio yma yn glod i Wibli Wobli a'u proffesiwn.

”

RYDYM YN CARU EIN PLANED

Yn Wibli Wobli, mae gofalu am y blaned wedi'i blethu i bopeth a wnawn. Rydym yn credu mewn meithrin parch dwfn at natur trwy chwarae yn yr awyr agored, ymarfer cynaliadwyedd trwy ailgylchu a defnyddio adnoddau naturiol ac anturiaethau rheolaidd yn ein cymuned leol.

Mae plant yn dysgu archwilio'r byd gyda chwilfrydedd a gofal, boed yn plannu hadau, yn gweld bywyd gwyllt, neu'n helpu i dacluso manau gwyrdd. Mae gennym lyfrgell amlddiwylliannol gyda llyfrau o bob cwr o'r byd, yn archwilio gwahanol fwydydd o bob cwr o'r byd fel rhan o'n bwydlen ac yn dathlu amrywiaeth gyfoethog ein teuluoedd, hyd yn oed yn dysgu ieithoedd cartref sy'n helpu pob plentyn i deimlo ei fod yn cael ei weld a'i werthfawrogi. Drwy gofleidio cynaliadwyedd ac ymwybyddiaeth ddiwylliannol o'r blynyddoedd cynharaf, rydym yn tyfu dinasyddion caredig a meddylgar o'r byd.

EIN GWERTHOEDD

RYDYM YN CARU LLES

Mae'r bwyd i'r plant yn wych - rydw i bob amser eisiau'r fwyden fy hun ac mae bwydlenni ledled y byd ar gyfer arbrofi â gwahanol flasau a diwylliannau!

Nid dim ond blaenoriaeth i ni yw lles - mae'n angerdd. Credwn fod staff hapus ac iach yn creu'r amgylcheddau mwyaf meithringar i blant ffynnu. Dyna pam rydym yn buddsoddi'n ddwfn yn iechyd meddwl a chorfforol ein tîm trwy ein rhaglen Iechyd Sicr, ymweliadau rheolaidd, a diwylliant o ofal.

I'n plant, rydym yn creu manau diogel i archwilio teimladau, meithrin gwydnwch emosiynol, a dathlu unigrywiaeth ac unigoliaeth pob plentyn. Trwy weithgareddau cynhwysol, straeon a chwarae, rydym yn helpu plant i ddeall a chofleiddio gwahaniaethau, gan feithrin caredigrwydd a hyder o'r cychwyn cyntaf.

Credwn fod ffordd o fyw egniol a maeth da yn chwarae rhan hanfodol mewn lles. Rydym yn hyrwyddo chwarae awyr agored a gweithgareddau fel Chwaraeon yr Urdd. Mae ein prydau maethlon a ffres yn cael eu gweini ar y safle gan ein cogydd meithrin. Rydym yn darparu ar gyfer unrhyw alergeddau a gofynion dietegol trwy weini'r un prydau gyda chynhwysion amnewid fel bod pob plentyn yn cael ei gynnwys.

Bwyden Enghreifftiol

BWYDLEN WIBLI WOBLI – Bwyden Babis



Wythnos 1	Mon/Llun	Tues/Mawrth	Weds/Mercher	Thurs/iau	Fri/Gwener
Breakfast – Brecwast	Detholiad o rawnfwydydd				
AM Snack – Byrbryd	Ffrwythau + llaeth	Ffrwythau + llaeth	Ffrwythau + llaeth	Ffrwythau + llaeth	Ffrwythau + llaeth
Lunch – Cinio	Saws fajita cyw iâr cymysg gyda pasta a brocoli Fegan – cyw iâr quorn	Cyw iâr a reis gyda phiwri corn melys a llysiau Fegan – cyw iâr quorn	Macaroni Bolognese cartref gyda ffa gwyrdd Fegan – mins quorn	Psygodyn un pot a reis gyda brocoli Fegan – cyw iâr quorn	Rholiau 'pitsa' arddull zuchinni a thatws stwnsh. Fegan – caws di-laeth
PM Snack - Byrbryd	FFyn llysiau a hwmws	FFyn bara pitta wedi'u tostio gyda hwmws	Salad ffrwythau cymysg	Afocado wedi'i falu ar gacennau reis	logwrt naturiol Groegaidd gyda phiwri ffrwythau
Tea - Te	Myffins sbigoglys a banana gyda mefus ac iogwrt Groegaidd Fegan – iogwrt di-laeth	Cycholedd spageti ar dost Fegan - ffa	Omled ham/caws gydag afal wedi'i ferwi a sinamon Fegan – caws di-laeth, lapio olwynion pin yn lle omled	Bagels gyda chaws hufen a ffyn llysiau Fegan – caws hufen di-laeth	Crempogau cerch a banana gyda mefus a bananas



IAITH CYMRAEG

RYDYM YN CARU IAITH

Mae plant yn cael eu trochi yn y Gymraeg yn Wibli Wobli drwy ein Polisi Iaith. O gyfarchion bore i ganeuon, straeon a rhyngweithiadau chwareus, mae'r Gymraeg yn rhan fyw, anadlu o'n hamgylchedd. Mae'r dull hwn yn helpu plant i amsugno'r iaith yn naturiol, gan feithrin hyder a rhuglder o oedran cynnar.

Mae dod i gysylltiad cynnar ag ail iaith yn gwella datblygiad gwybyddol, yn gwella cof, yn meithrin ymwybyddiaeth ddiwylliannol, yn gwella sgiliau cymdeithasol ac yn agor cymaint o gyfleoedd. Drwy ddathlu traddodiadau Cymru a defnyddio'r iaith yn ysturlon bob dydd, rydym yn helpu plant i gysylltu â'u treftadaeth a thyfu i fyny gyda theimlad cryf o hunaniaeth a pherthyn.

Cwestiynau Cyffredin:

C: A yw ein holl blant yn dod o deuluoedd sy'n siarad Cymraeg? A: DIM O gwbl! Mewn gwirionedd, nid yw'r rhan fwyaf o'n plant yn dod o gefndir Cymraeg o gwbl.

C: A fydd mynd i feithrinfa sy'n siarad Cymraeg yn atal fy mhlentyn gyda'i Saesneg? A: NAC YDW. Mae dysgu iaith arall mewn gwirionedd yn gwella eich gallu i brosesu iaith, gan gynnwys eich mamiaith, felly bydd yn gwella eu gallu i brosesu a dysgu Saesneg.



C: Bydd fy mhlentyn yn mynd i ysgol Saesneg. Pam ddylwn i eu rhoi mewn meithrinfa iaith Gymraeg?

A: Mae cymaint o fanteision i ddysgu iaith arall yn ifanc. Manteision gwybyddol fel meddwl beirniadol, meddwl hyblyg, creadigrwydd, y gallu i brosesu eich mamiaith ac ieithoedd eraill yn y dyfodol. Yn sicr nid yw'n niweidiol cael eich amlygu i iaith arall hyd yn oed os am gyfnod dros dro.

C: Mae fy mhlentyn eisoes yn siarad dwy iaith yn rhugl. A fyddan nhw'n drysu? A: Dim o gwbl. Mae rhai o'n plant yn siarad mwy nag un iaith ac nid oes ganddyn nhw unrhyw broblemau i ddysgu'r Gymraeg - Eidaleg, Ffrangeg a Hindi i enwi ond rhai! Mae plant dwyieithog yn tueddu i ddysgu'r Gymraeg hyd yn oed yn haws na phlant uniaith.

C: Dydw i ddim yn siarad Cymraeg. Ydy hynny'n bwysig? A: Dim o gwbl. Nid yw'r rhan fwyaf o'n rhieni'n siarad Cymraeg. Gallwn ni hyd yn oed ddarparu cefnogaeth gyda dysgu Cymraeg os oes gennych chi ddiddordeb!

“
Roeddwn i'n bryderus i ddechrau
ynglŷn â meithrinfa Gymraeg gan nad
ydym yn siarad Cymraeg gartref ond
ni ddylwn fod wedi bod. Rwy'n
rhyfeddu at y caneuon a'r
ymadroddion Cymraeg mae hi'n eu
canu ac mae hi wrth ei bodd!

Rydym nawr yn edrych ar addysg
Gymraeg gan ein bod mor hapus
gyda'r effaith gadarnhaol y mae wedi'i
chael arni.



Y BROSES YMSEFDLU MEWN

Rydym yn gweithio gyda rhieni a phlant i sicrhau trosglwyddiad llyfn, cefnogol a chroesawgar i'n teulu Wibli Wobli.

Ychydig cyn eich dyddiad cychwyn, byddwn yn cysylltu â chi i drefnu eich dau sesiwn ymgartrefu am ddim o 2 awr a fydd fel arfer yn digwydd yr wythnos cyn eich dyddiad cychwyn. Yn y sesiwn gyntaf, byddwch yn cwrdd â staff a fydd yn:

- mynd trwy bolisiau, gweithdrefnau ac arferion y feithrinfa
- cwblhau'r ffurflen Popeth Amdanaf gyda manylion am ddiddordebau ac anghenion eich plentyn
- ateb unrhyw ymholiadau neu bryderon a allai fod gennych am y broses ymgartrefu

Ar gyfer y sesiwn gyntaf, PaciWch fag gyda dillad sbâr, potel ddŵr neu fformiwla, ac i'r plant iau, cewynnau ac unrhyw gysurwr.

Mae'n gwbl normal teimlo'n bryderus am y sesiwn gyntaf ond rydym yn ceisio annog rhieni i deimlo mor dawel eu meddwl a brwdfrydig â phosibl ac i gadw'r drefn gollwng yn fyr ac yn llawen i helpu rhai bach i ymgartrefu. Os oes angen sesiynau ymgartrefu ychwanegol neu drawsnewid graddol i'r feithrinfa, byddwn yn trafod hyn gyda chi yn unigol.

Polisi Gweithwyr Allweddol

Mae gweithiwr allweddol eich plentyn wedi'i ddyrannu o'r dechrau a bydd yn brif bwynt cyswllt i chi, fodd bynnag, mae plant yn gyffredinol yn bondio'n dda gyda'r holl staff yn eu hystafell yn y lleoliad ac yn cael gofal ganddynt.

Ar gyfer unrhyw ymholiadau neu bryderon yn ystod y cyfnod ymgartrefu hwn, gallwch siarad â'ch gweithiwr allweddol neu mae arweinydd yr ystafell a/neu'r rheolwyr wrth law os oes angen.

Mae fy mab tair oed wedi ymgartrefu mor dda ac mae'r tîm wedi cefnogi ei anghenion ychwanegol yn anhygoel. Mae'n mynd i mewn ac yn dod allan yn gwenu bob dydd!



EIN FFI OEDD

Mae ein ffioedd diweddaraf ar gael ar ein gwefan www.wibliwobli.co.uk. Mae pob pryd bwyd, byrbryd, adnoddau (ac eithrio clytiau a fformiwla) a gweithgareddau wedi'u cynnwys.

Rydym yn codi ffi gofrestru na ellir ei had-dalu o £100 i sicrhau'r lle.

Rydym yn derbyn taliad trwy ofal plant di-dreth, oriau a ariennir gan y cynnig gofal plant, talebau gofal plant a chredyd cyffredinol. Rydym hefyd yn cynnig lleoedd a ariennir gan Dechrau'n Deg yn y ddau leoliad, ac yng Nghasnewydd yn unig, oriau a ariennir gan addysg.



Codir tâl ar rieni os nad ydynt yn mynychu sesiwn a archebwyd lle mae'r feithrinfa'n dal ar agor. Fodd bynnag, gall rhieni werthu sesiynau meithrinfa nas defnyddiwyd i blant eraill yn yr un ystafell, ac ychwanegir credyd at eu cyfrif os yw rhiant arall yn prynu'r sesiwn.

Rydym ar gau ar benwythnosau, gwyliau banc statudol a'r cyfnod rhwng Dydd Nadolig a Dydd Calan. Nid ydym yn codi tâl am wyliau banc na diwrnodau cau sy'n ychwanegol at oriau a ariennir.

Rydym yn cynnig gostyngiadau dewisol i frodyr a chwiorydd, lleoedd llawn amser a diwrnodau tawelach yn amodol ar argaeledd a niferoedd yn y lleoliad unigol. Gallwn ddiwygio ein ffioedd unwaith y flwyddyn, rhoddir rhybudd ysgrifenedig o leiaf mis i rieni o unrhyw gynnydd mewn ffioedd.

Os na chaiff plentyn ei gasglu o fewn 30 munud i'r sesiwn a archebwyd, dilytir ein gweithdrefn casglu hwyr. Cynhelir cymhareb staff, a bydd dau aelod o staff yn aros gyda'r plentyn os yw'n mynd y tu allan i oriau arferol. Codir ffi casglu hwyr am y gofal ychwanegol a all gynnwys y costau gweithredu ychwanegol a achosir.

ANFONEBAU

Mae anfonebau'n ddyledus ar y 1af o bob mis ar gyfer gofal plant yn ystod y mis hwnnw. Mae ffioedd talu hwyr yn berthnasol os derbynnir arian ar ôl y dyddiad hwnnw.



CYFATHREBU A RHIENI

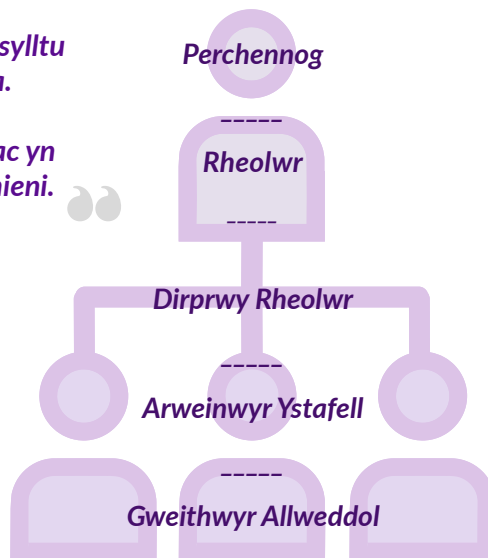
Rydym yn gweithio mewn partneriaeth â rhieni i gefnogi taith pob plentyn.

Credwn fod cyfathrebu cryf yn allweddol i feithrin ymddiriedaeth a phartneriaeth gref gyda rhieni. Byddwch yn derbyn diweddariadau rheolaidd trwy ein ap meithrinfa Family ar ddiwrnod eich plentyn, gan gynnwys lluniau, logiau prydu bwyd, amseroedd cysgu, a chyhoeddiadau pwysig. Rydym hefyd yn defnyddio'r ap ar gyfer negeseuon, anfonebu, a rhannu newyddion y feithrinfa. Rydym yn cynnal sesiynau aros a chwarae a nosweithiau rhieni rheolaidd i roi'r cyfle i chi drafod cynnydd a datblygiad eich plentyn. Mae gennym hefyd bwyllgor rhieni y gall rhieni ymuno ag ef i gyflwyno eu syniadau eu hunain ar redeg y feithrinfa.

Os oes gennych unrhyw gwestiynau neu os oes angen cymorth arnoch, mae ein siart gweithredol staff yn amlinellu'n glir pwy i siarad ag ef - o weithwyr allweddol i arweinwyr ystafelloedd a rheolwyr - fel eich bod bob amser yn gwybod at ble i droi. Mae enwau ac wynebâu'r holl staff a'u rôl wedi'u harddangos yn glir yn y lleoliad.

Mae'r sesiynau aros a chwarae ymgysylltu â rhieni yn gwneud fy mis yn dda.

Mae'r tîm arweinyddiaeth yn wych ac yn mynd y tu hwnt i'r disgwyl i helpu rhieni.



Mae'n wych gweld yr holl luniau o'r hyn mae'n ei wneud yn ystod y dydd ac mae'r staff yn darparu cyfathrebu rhagorol wrth gasglu.

Rydyn ni bob amser yn cael gwybod beth sy'n digwydd ac yn gallu gofyn am help gyda phethau fel cyllid, sut mae oriau gofal plant yn cael eu dosbarthu neu hyd yn oed adnoddau i wella ein Cymraeg ein hunain.

Rwyf wrth fy modd gyda'r gofal y mae fy mhentyn yn ei gael ym Meithrinfa Wibli Wobli.

Mae'r diweddariadau a'r lluniau dyddiol yn rhoi tawelwch meddwl i mi, gan wybod bod fy mhentyn mewn dwylo da ac yn ffynnu mewn amgylchedd mor gadarnhaol.



EIN DARPARIAETH

Mae plant yn dilyn trefn ddyddiol a chynllun sy'n canolbwyntio ar y plentyn ac sy'n seiliedig ar y cwricwlwm, ac sy'n cydymffurfio'n llawn â Chwricwlwm Newydd Cymru ac yn darparu amgylchedd ysgogol a diddorol i'r plant. Rydym yn hyrwyddo dysgu trwy chwarae ac archwilio'r amgylchedd trwy wahoddiadau i chwarae gan ddilyn y Dull Chwilfrydedd.

Dyma enghraifft o drefn ddyddiol (wedi'i haddasu yn ôl oedran ac anghenion y plant):

- 8:00 - 9:00 Cyfarch rhieni - Amser brecwast
- 9:00 - 9:15 Amser croeso grŵp
- 9:15 - 10:00 Chwarae rhydd - Llif rhydd y tu mewn a'r tu allan
- 10:00 - 10:30 Byrbryd rholio
- 10:30 - 11:00 Llif rhydd y tu mewn a'r tu allan
- 11:00 - 11:45 Gweithgareddau corfforol
- 11:45 - 12:30 Amser cinio
- 12:30 - 2:00 Amser tawel a ffarwelio â'n plant boreol
- 2:00 - 2:15 Byrbryd rholio - Llif rhydd y tu mewn a'r tu allan
- 2:15 - 3.30 Gweithgareddau Grŵp
- 3:15 - 3:45 Gweithgaredd Corfforol
- 3:45 - 4:15 Amser te
- 4:15 - 5:00 Amser stori - chwarae Rhydd paratoi i fynd adref
- 5:00 - 6:00 Cyfarch rhieni - Amser mynd adref



Mae prydau bwyd y feithrinfa yn cael eu coginio ar y safle gan gogyddes y feithrinfa. Rydym yn darparu bwydlen tair wythnos ac wythnos ddiwylliant bob mis yn archwilio bwyd o bob cwr o'r byd. Mae prydau bwyd yn faethlon, yn amrywiol ac wedi'u haddasu i ddiwallu unrhyw alergeddau, anoddefiadau a gofynion dietegol. Cedwir prydau bwyd wedi'u haddasu mor debyg â phosibl fel bod pob plentyn yn mwynhau'r un profiad bwyta.

Byddwn yn cynnig nifer o weithgareddau yn y feithrinfa trwy chwarae rhydd a chwarae strwythuredig a gweithgareddau wedi'u trefnu er enghraifft amser cylch. Byddwn hefyd yn edrych i ddod â gweithgareddau ychwanegol gan ddarparu'r allanol i mewn i roi cyfleoedd gwahanol i blant, yn enwedig y rhai a all ddarparu gwasanaethau trwy gyfrwng y Gymraeg - fel Babis Bach Babis, gwyddoniaeth Sparklab Cymru a chwaraeon yr Urdd.

EIN STAFF

Cymwysterau staff:

Rydym yn dilyn arferion recriwtio diogel ac yn sicrhau bod yr holl staff wedi'u cymhwyso'n addas, wedi'u gwirio gan y DBS a'u geirdau.

- Mae'r holl staff uwch wedi'u cymhwyso i lefel tri gofal plant ac lefel pump gofal plant neu'n gweithio tuag ato.
- Mae staff sy'n gweithio gyda phlant ysgol wedi'u cymhwyso i lefel tri gwaith chwarae neu'n gweithio tuag ato.
- Mae pob ymarferydd meithrin wedi'i gymhwyso neu'n gweithio tuag at lefel tri gofal plant.

Rydym yn croesawu prentisiaethau, lleoliadau myfyrwyr a chyfleoedd hyfforddi i siaradwyr Cymraeg sy'n awyddus i ddilyn gyrfa mewn gofal plant. Mae myfyrwyr a gwirfoddolwyr nad ydynt wedi cymhwyso yn ased gwerthfawr i'r lleoliad ond ni fyddant byth yn cael eu gadael heb oruchwyliaeth nac yn cyfrif tuag at y gymhareb staff. Mae staff domestig a swyddfa i gyd yn cael gwiriadau DBS Manwl a gallant fod â chysylltiad dyddiol â'r plant ond ni fyddant yn cael eu gadael gyda'r plant.

Cymhareb staff yw:

0-2 oed: 1 staff i 3 o blant, 2-3 oed: 1 staff i 4 o blant, 3-12 oed: 1 staff i 8 o blant

Er mwyn gweithredu'r feithrinfa'n effeithiol, mae staff wedi'u hyfforddi'n llawn i weithredu ein polisiau a'n gweithdrefnau yn rheolaidd, ac mae strwythur clir ar waith i staff gyfathrebu. Cynhelir cyfarfodydd staff rheolaidd i drafod gweithrediadau yn ogystal ag unrhyw bryderon ac adborth.



Strwythur adrodd staff:

- Rheolwr y Feithrinfa yn adrodd i Berchennog y Feithrinfa
 - Dirprwy Reolwr / Arweinwyr Ystafell yn adrodd i Reolwr y Feithrinfa
 - Ymarferwyr a Myfyrwyr y Feithrinfa / Gwirfoddolwyr / Prentisiaid / Staff Asiantaeth yn adrodd i'w Harweinydd Ystafell
- Os codir pryder am y person y maent yn adrodd iddo, gallant adrodd i'r unigolyn uchod (e.e. gall ymarferydd meithrinfa adrodd eu pryder am eu harweinydd ystafell i'r Dirprwy Reolwr). Gellir gofyn am gyfarfod ar sail 1:1 ac mae ystafell ar gael at y diben hwn.

Mae'n ofynnol i staff ddarllen a deall ein holl bolisiau a chwblhau hyfforddiant gorfodol fel rhan o'u sesiwn sefydlu, gan gynnwys Cymorth Cyntaf, Diogelwch Tân, Hylendid Bwyd a Diogelu Plant.

PECYN RHIANT

Gweler isod ddogfennaeth, polisiau a gweithdrefnau pwysig a ble i ddod o hyd iddynt.

Mae rhieni'n cwblhau Ffurflen Gofrestru sy'n cynnwys llofnodi ein Telerau ac Amodau Contract ac yna'n cael dolen i gael mynediad at eu cyfrif ar Famly. Yna anfonir anfoneb am y ffi gofrestru o £100 drwy Famly, y mae'n rhaid ei thalu i sicrhau'r lle.

Gellir gweld copïau o'r dogfennau allweddol isod yn adran dogfennau ap Famly. Mae copïau o'r holl bolisiau ar gael ar wefan ein meithrinfa www.wibliwobli.co.uk/our-policies/.

KEY DOCUMENTS (on Famly) – DOGFENNAU ALLWEDDOL (ar Famly)	
Nursery Brochure (SOP) Contract Terms and Conditions CIW Certificates – EN and CY ICO Certificate Insurance Certificate Price List Staff Operational Chart Early Years Wales Certificate Mudiad Meithrin Certificate NDNA Certificate Clybiau Plant Certificate	Llyfryn Meithrinfa (SOP) Cytundeb Termau ac Amodau Tystysgrifau AGC – Saesneg a Chymraeg Tystysgrif ICO Tystysgrif Yswiriant Rhestr Brisiau Siart Gwiethredol Staff Tystysgrif Early Years Wales Tystysgrif Mudiad Meithrin Tystysgrif NDNA Tystysgrif Clybiau Plant
HIGHLIGHTED POLICIES (on website) – POLISIAU PERTHNASOL (ar y wefan)	
Child Safeguarding Policy Complaints Policy Medication Policy Sickness Policy	Polisi Diogelu Plant Polisi Cwynion Polisi Meddyginiaeth Polisi Salwch



MANYLION SAFLE CAERDYDD

Unigolyn Cyfrifol:	Leah George, Natasha Baker
Person â Gofal:	Leah George

Rhif AGC CYM00006455. Rydym yn feithrinfa gofal dydd llawn sydd wedi'i chofrestru i ddarparu gofal i hyd at 69 o blant 0-12 oed fel a ganlyn:

- 0-2 oed- 18 o blant
- 2-12 oed - 51 o blant (o'r rhain rhwng 7 a 12 oed ac uchafswm o 10 o blant)

Rydym hefyd yn darparu darpariaeth gofleidiol gydag ysgolion lleol yn amodol ar ddiddordeb a darpariaeth gwyliau. Rydym ar agor o ddydd Llun i ddydd Gwener 7yb i 6yp.

Rydym yn wasanaeth cynhwysol ac yn croesawu plant ag anghenion ychwanegol. Mae gennym Gydlynnydd ADY dynodedig i gefnogi anghenion plant ADY ac mae staff yn derbyn yr hyfforddiant angenrheidiol i ddarparu gofal o ansawdd uchel.

Rydym yn hyrwyddo cydraddoldeb, amrywiaeth a pharch ar draws pob agwedd ar ein gwasanaeth. Caiff pob plentyn, rhiant, gofalwr, staff a thrydydd partïon eu trin â pharch, eu gwranddo arnynt a'u cynnwys. Mae gweithgareddau'n hygyrch i bawb, ac mae plant yn cael eu cynnwys mewn gwneud penderfyniadau sy'n briodol i'w hoedran a'u datblygiad.

Gofal Unigol i Blant

Rydym yn meithrin dysgu a thwf pob plentyn drwy iaith, chwarae a gweithgareddau sy'n cael eu harwain gan ddewisiadau. Gan gydnabod bod pob plentyn yn unigryw, rydym yn teilwra gofal i'w hanghenion, eu galluoedd a'u diddordebau, gan ddarparu ffiniau clir, disgwyliaid sy'n briodol i'w hoedran a goruchwyliaeth ddiogel i gefnogi annibyniaeth.

Mae pob plentyn yn cael gweithiwr allweddol sy'n cydweithio â rhieni a gofalwyr i sicrhau bod gofal wedi'i bersonoli. Cwblheir asesiadau drwy ymweliadau ymlaen llaw, sesiynau ymgartrefu a ffurflenni cofrestru, gan gynnwys gwybodaeth am alergeddau, anghenion dietegol, meddyginiaeth, gofynion cymorth ychwanegol, ac ar gyfer plant hŷn, manylion am ddyfeisiau personol neu feddyginiaeth hunan-weinyddedig.



CYFLEUSTERAU SAFLE CAERDYDD

Mae'r prif leoliad meithrinfa mewn adeilad wedi'i leoli yn rhif 53 Y Parêd, Y Rhath, Caerdydd, CF24 3AB. Mae gan y feithrinfa ddrws ffrynt diogel lle mae'n rhaid i rieni ffonio i mewn. Gall staff fynd i mewn gan ddefnyddio allweddi fob.

Wrth i chi fynd i mewn i'r feithrinfa am y tro cyntaf mae ardal groeso a desg. Ar yr ochr chwith wrth i chi gerdded i mewn mae ystafell y babnod (0-2 oed), ar yr ochr dde mae ystafell y plant bach (2-3 oed). Wrth ymyl y fynedfa mae toiled plant ac ystafell newid ac y tu mewn i'r ystafell plant bach mae pedwar toiled plant arall. Mae pob plentyn yn cael ei hebrwng bob amser wrth fynd i mewn i'r fynedfa lawr grisiau.



Y tu ôl i'r ardal groeso mae mynediad i'r ardd sydd ar gyfer plant sy'n mynychu'r feithrinfa yn unig. Mae mynediad i'r llawr cyntaf trwy'r lifft neu'r grisiau. Ar yr ochr dde mae ystafell y cyn-ysgol (3-12 oed), yn y canol mae mynediad i ystafelloedd newid a thoiledau i blant a thoiled ar wahân i staff ac ymwelwyr. Mae plant yn cael eu hebrwng bob amser i gael mynediad i'r toiled neu'r cyfleusterau newid. Ar yr ochr chwith mae'r gegin, ystafell y staff, storfa a swyddfa sydd ond yn hygyrch i staff trwy fynediad ffob. Bydd yr ystafell feithrin yn cael ei haddasu ar gyfer plant hŷn cyn, ar ôl ysgol a thrwy gydol y gwyliau. Byddwn yn darparu adnoddau sy'n briodol i'w hoedran, manau gwaith tawel a chyfleoedd ar gyfer gweithgareddau mwy heriol. Cynhelir asesiadau risg i amdiffyn plant iau rhag adnoddau bach ac adnoddau a fwriadwyd ar gyfer plant hŷn yn unig.

I flaen yr adeilad mae lleoedd parcio preifat ar gyfer hyd at 4 cerbyd. Mae parcio ar y stryd ar gael ar hyd The Parade. Atgoffir rhieni eu bod yn cadw cyfrifoldeb llawn am eu plant tra byddant y tu allan i brif fynedfa adeilad y feithrinfa fel yr amlinellir yn ein Polisi Cyrraedd ac Ymadael.

Ym mhob un o'r ystafelloedd mae gweithgareddau ac adnoddau sy'n briodol i'r oedran, gyda manau cysgu a thawelwch ar wahân, cornel cartref, ardal byd bach, cornel artist a bistro a ddefnyddir yn ystod amseroedd byrbryd a phrydau bwyd.

Mae teledu cylch cyfyng ar waith ledled y feithrinfa ym mhob ardal lle mae plant yn cael gofal, ac eithrio toiledau a manau newid, er mwyn sicrhau diogelwch plant, staff ac ymwelwyr. Mae gennym bolisi a gweithdrefn Gwacáu Tân a ddilynir rhag ofn tân, gyda'r Man Ymgynnull ym mhen pellaf gardd y feithrinfa. Ymatebir i ddamweiniau a digwyddiadau yn brydlon, cofnodir a rhoddir gwybod amdanynt i rieni ac awdurdodau perthnasol yn unol â'n polisiau a'n gweithdrefnau.

Allanau – byddwn yn mynd â'r plant allan yn rheolaidd fel y gallant elwa o brofiadau yn yr ardal leol. Er enghraifft, Parc Bute lleol, busnesau a siopau. Gall allanau i blant hŷn gynnwys profiadau cymunedol, gan hrywyddo annibyniaeth a chyfrifoldeb.



MANYLION SAFLE CASNEWYDD

Unigolyn Cyfrifol:	Nicola Passey, Natasha Baker
Personau â Gofal:	Nicola Passey, Molly Nereews, Carys-Anne Pounds

Rhif AGC CYM00006088. Rydym yn feithrinfa gofal dydd llawn sydd wedi'i chofrestru i ddarparu gofal i hyd at 100 o blant 0-5 oed fel a ganlyn:

- 0-2 oed - 30 o blant
- 2-3 oed - 30 o blant
- 3-5 oed - 40 o blant

Rydym ar agor o ddydd Llun i ddydd Gwener 7:30yb i 6yp. Rydym yn wasanaeth cynhwysol ac yn croesawu plant ag anghenion ychwanegol. Mae gennym Gydlynnydd Anghenion Dysgu Ychwanegol dynodedig i gefnogi anghenion plant Anghenion Dysgu Ychwanegol ac mae staff yn derbyn yr hyfforddiant angenrheidiol i ddarparu gofal o ansawdd uchel.

Rydym yn hyrwyddo cydraddoldeb, amrywiaeth a pharch ar draws pob agwedd ar ein gwasanaeth. Caiff pob plentyn, rhiant, gofalwr, staff a thrydydd partïon eu trin â pharch, eu gwranddo arnynt a'u cynnwys. Mae gweithgareddau'n hygyrch i bawb, ac mae plant yn cael eu cynnwys mewn gwneud penderfyniadau sy'n briodol i'w hoedran a'u datblygiad.

Gofal Unigol i Blant

Rydym yn meithrin dysgu a thwf pob plentyn drwy iaith, chwarae a gweithgareddau sy'n cael eu harwain gan ddewisiadau. Gan gydnabod bod pob plentyn yn unigryw, rydym yn teilwra gofal i'w hanghenion, eu galluoedd a'u diddordebau, gan ddarparu ffiniau clir, disgwyliadau sy'n briodol i'w hoedran a goruchwyliaeth ddiogel i gefnogi annibyniaeth.

Mae pob plentyn yn cael gweithiwr allweddol sy'n cydweithio â rhieni a gofalwyr i sicrhau bod gofal wedi'i bersonoli. Cwblheir asesiadau drwy ymweliadau ymlaen llaw, sesiynau ymgartrefu a ffurflenni cofrestru, gan gynnwys gwybodaeth am alergeddau, anghenion dietegol, meddyginiaeth, gofynion cymorth ychwanegol.



CYFLEUSTERAU SAFLE CASNEWYDD

Mae'r prif leoliad meithrinfa yn Unedau 1 a 3 o Oak House, Vaughan Court, Casnewydd, NP10 8BD. Ar y llawr gwaelod (Uned 1) mae gofal yn digwydd i Blant Bach (2-3 oed) a Chynysgol (3-5 oed). Ar y llawr cyntaf (Uned 3) mae gofal yn digwydd i Fabanod (0-2 oed). Mae'r swyddfeydd, y storfa a'r ardal groesawu ymwelwyr wedi'u lleoli i fyny'r grisiau yn Uned 3 o'r un adeilad. Mae toiledau ar wahân i staff ac ymwelwyr wedi'u lleoli yn yr ardaloedd cymunedol ar y ddau lawr, gan gynnwys cyfleusterau newid babanod i lawr y grisiau. Mae gan y feithrinfa ddrws diogel lle mae'n rhaid i rieni ffonio i mewn. Gall staff fynd i mewn gan ddefnyddio allwedd fob.



Wrth fynd i mewn i'r feithrinfa mae'r ystafell cewynnau ar gyfer y plant bach i'r dde ac yna'r prif ardal chwarae i Blant Bach, yr Ystafell Synhwyrdd/Gysgu a'r ystafell Fwyta. Mae'r feithrinfa ymhellach i lawr y coridor gydag ystafell chwarae fawr a mynediad rhydd i'r ardd trwy ddrws ar ddiwedd yr ystafell. Mae ganddyn nhw hefyd eu hystafell fwyta eu hunain sydd ynghlwm wrth ardal y gegin i lawr y grisiau. Mae gan bob plentyn bach a phlentyn cyn-ysgol fynediad i'r toiledau i lawr y grisiau. Mae babanod wedi'u lleoli ar y llawr cyntaf. Mae lle mawr, croesawgar, gyda'r gegin, ystafelloedd newid babanod a storio ar y chwith. Yna mae'r lle'n agor i'r brif ystafell chwarae a'r ystafell gysgu wedi'u lleoli ar yr ochr dde. Ar ddiwedd yr ystafell, mae trawsnewidiad ysgafn i ardal fwy heddychlon a thawel, sy'n arwain at ddwy ystafell grib lai.

Mae digon o le parcio am ddim i staff a rhieni ollwng eu plant ar y safle. Mae gardd y feithrinfa wedi'i rhannu'n ddwy ardal, Cyn-ysgol a phlant bach (Prif ardal yr ardd) a Babanod (ardal gardd llawr padiog lai). Mae gennym ni hefyd ardal ysgol goedwig fawr ar ochr arall yr adeilad gyda mynediad dan oruchwyliaeth unigryw i blant meithrin, gan gynnwys toiled compost awyr agored, ardal pwll tân, pabell gloch, cysgwyr gyda phlanhigion, tŷ pryfed a ffau.

Mae teledu cylch cyfyng yn gweithredu ledled y feithrinfa ym mhob ardal lle mae plant yn cael gofal, ac eithrio toiledau a manau newid, i sicrhau diogelwch plant, staff ac ymwelwyr. Mae gennym bolisi a gweithdrefn Gwacáu Tân a ddilyni'r rhag ofn tân, gyda'r Man Ymgynnull ym mhen pellaf y maes parcio. Ymatebir i ddamweiniau a digwyddiadau yn brydlon, cofnodir a rhoddir gwybod amdanynt i rieni ac awdurdodau perthnasol yn unol â'n polisiau a'n gweithdrefnau.

Teithiau allan - byddwn yn mynd â'r plant allan yn rheolaidd fel y gallant elwa o brofiadau yn yr ardal leol. Er enghraifft Parc Tredegar lleol, busnesau a siopau lleol.

CYSYLLTU A NI

Mae cyfathrebu da yn allweddol - rydym yn mabwysiadu dull o dryloywder a gonestrwydd

Dyma ein manylion cswllt:

Wibli Wobli Casnewydd
Uned 1 Tŷ'r Dderw
Cwrt Vaughan
Casnewydd NP10 8BD
01633 328970
newport@wibliwobli.co.uk

Wibli Wobli Caerdydd
53 Y Parêd
Caerdydd CF24 3AB
029 22973722
cardiff@wibliwobli.co.uk

“
Dewis Meithrinfa Wibli Wobli oedd y penderfyniad gorau i mi erioed ei wneud!! Mae fel potel o ddiodyd yn gyrru i mewn i faes parcio'r feithrinfa.

O'r diwrnod cyntaf, mae'r staff wedi mynd y filltir ychwanegol i wneud i fy mab deimlo'n gyfforddus ac yn groesawgar. Mae'n cael ei drin fel eu rhai eu hunain. Ni allwn fod yn hapusach yn fy newis o feithrinfa!
”

Gallwch hefyd ymweld â www.wibliwobli.co.uk i gysylltu â ni a gweld ein polisiau a'n gweithdrefnau.

Wibli Wobli yw enw masnachu Wibli Wobli Nursery Ltd rhif cwmni 13980536 a Wibli Wobli Cardiff Ltd rhif cwmni 16590606.

Os oes gennych unrhyw bryderon neu bryderon - rydym yma i helpu. Gallwch ddilyn ein Gweithdrefn Gwyno sydd ar gael ar gais neu sydd ar gael unrhyw bryd ar ein gwefan. Gallwch hefyd gysylltu â'n corff rheoleiddio Arolygiaeth Gofal Cymru:

Arolygiaeth Gofal Cymru
LLywodraeth Cymru
Sarn Mynach
Cyffordd Llandudno
LL31 9RZ
Ffôn : 0300 7900 126
Ebst : CIW@gov.wales

Rydym yn edrych ymlaen yn fawr at eich taith gyda ni yn Wibli Wobli ac at eich cefnogi chi a'ch plentyn bob cam o'r ffordd.

Tîm Wibli Wobli

Mae'r canllaw hwn ar gael yn y Gymraeg ac mewn print mwy neu fformatau amgen ar gais er mwyn sicrhau hygyrchedd i bob teulu. Adolygwyd y llyfryn hwn ddiwethaf ym mis Mawrth 2026 a bydd yn cael ei adolygu'n flynyddol. Bydd unrhyw newidiadau a wneir i'n llyfryn yn cael eu hysbysu i AGC.

